

# Hampshire Water Transfer and Water Recycling Project Environmental Statement - Figure 17.2 Index of Multiple Deprivation

**VOLUME NUMBER: 6**

**PLANNING INSPECTORATE SCHEME NUMBER: WA010002**

**APPLICATION DOCUMENT REFERENCE: 6.3**

**APFP REGULATION: 5(2)(a)**

May 2026

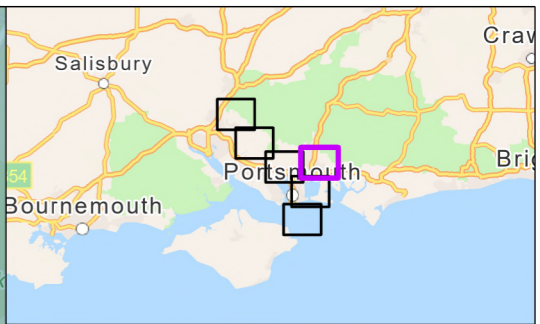
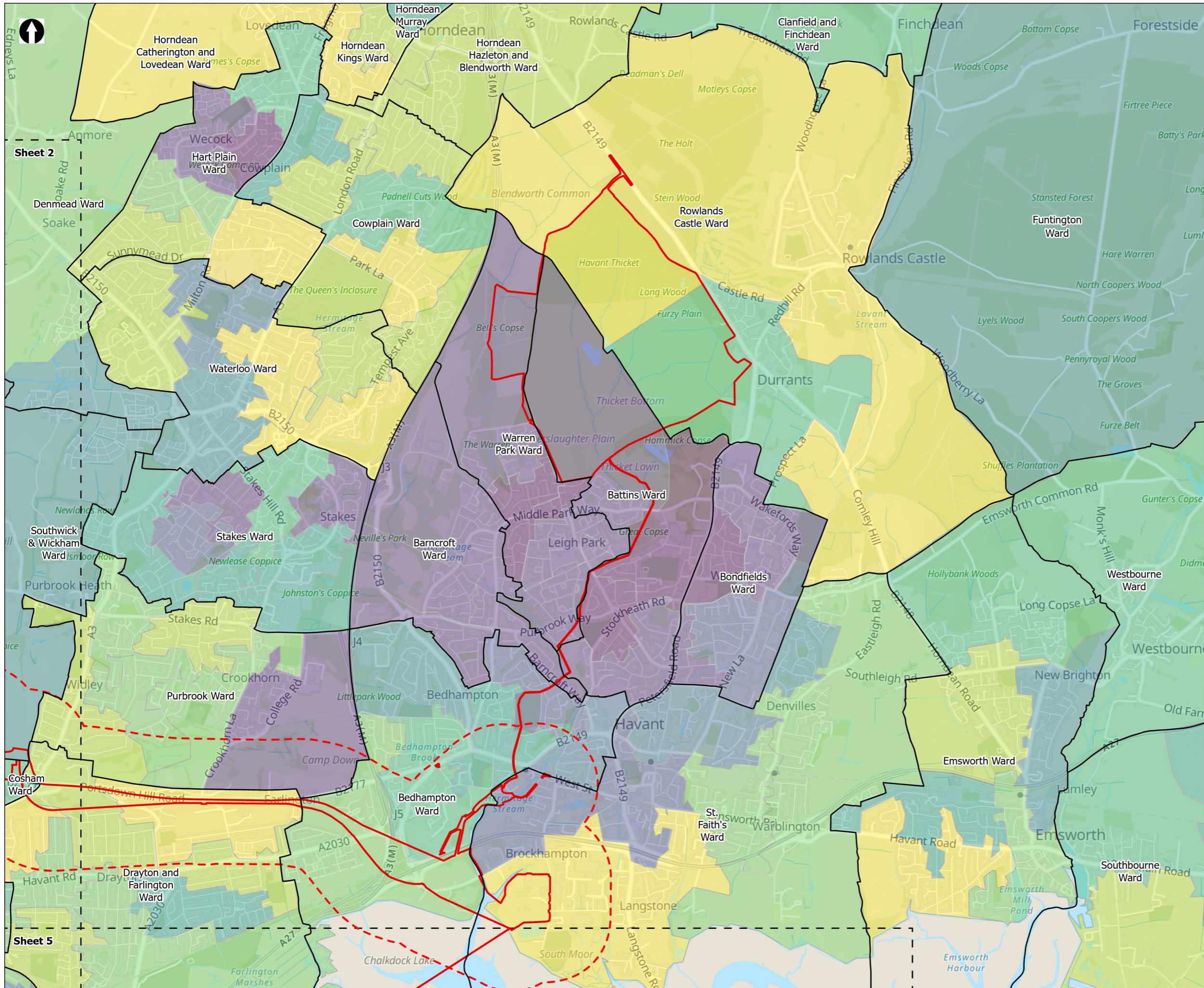
Version 0



from  
**Southern  
Water** 

The Southern Water logo graphic consists of three stylized, wavy blue lines of varying lengths, positioned to the right of the text 'Southern Water'.





**Order Limits**

- Socio-economics, Tourism and Health 500m study area
- Sheet Extent Boxes 1:30K
- Ward Boundary

**Indices of Multiple Deprivation (2019) - (Based on LSOA's)**

- Most deprived decile
- 2nd
- 3rd
- 4th
- 5th
- 6th
- 7th
- 8th
- 9th
- Least deprived decile

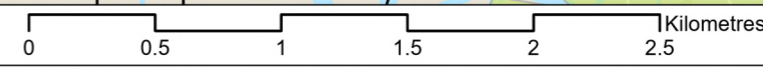
Coordinate system: British National Grid; Datum: OSGB 1936  
 Data sources: © Crown copyright and database rights 2026 Ordnance Survey 0100031673. Sources: Esri, TomTom, Garmin, FAO, NOAA, USGS, © OpenStreetMap contributors, and the GIS User Community, Contains OS data © Crown Copyright and database right 2023. Contains data from OS Zoomstack, Contains OS data © Crown Copyright and database right 2026. Contains data from OS Zoomstack

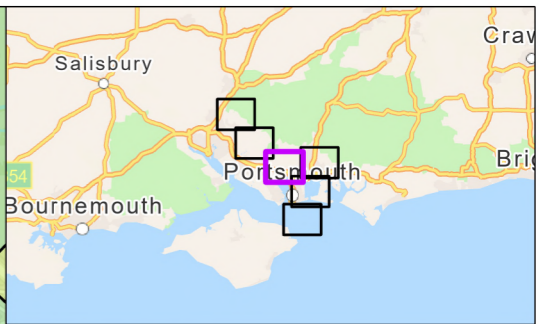
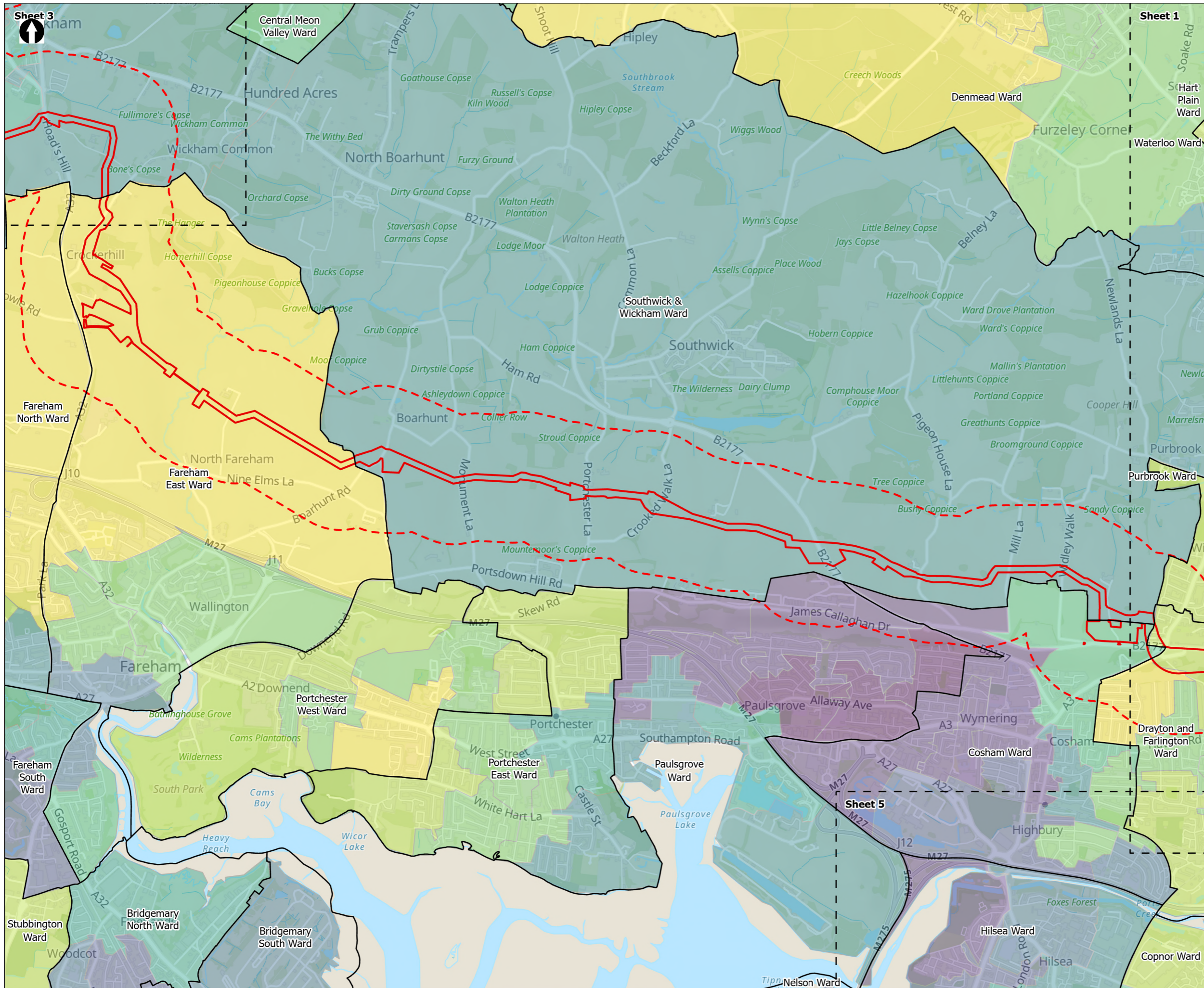
PROJECT TITLE  
 Hampshire Water Transfer and Water Recycling Project



Figure 17.2  
 Index of Multiple Deprivation  
 Sheet 1 of 6

Drawn <b>DL</b>	GIS Checked <b>MW</b>	Checked <b>MP</b>	Approved <b>AK</b>
Scale at A3 <b>1:30,000</b>	Status <b>Final</b>	Revision <b>05</b>	Security <b>STD</b>





- Order Limits
  - Socio-economics, Tourism and Health 500m study area
  - Sheet Extent Boxes 1:30K
  - Ward Boundary
- Indices of Multiple Deprivation (2019) - (Based on LSOA's)**
- Most deprived decile
  - 2nd
  - 3rd
  - 4th
  - 5th
  - 6th
  - 7th
  - 8th
  - 9th
  - Least deprived decile

Coordinate system: British National Grid; Datum: OSGB 1936  
 Data sources: © Crown copyright and database rights 2026 Ordnance Survey 0100031673. Sources: Esri, TomTom, Garmin, FAO, NOAA, USGS, © OpenStreetMap contributors, and the GIS User Community, Contains OS data © Crown Copyright and database right 2023. Contains data from OS Zoomstack, Contains OS data © Crown Copyright and database right 2026. Contains data from OS Zoomstack

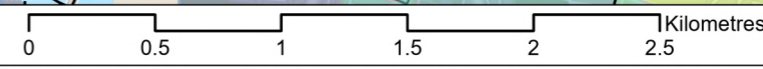
PROJECT TITLE  
 Hampshire Water Transfer and Water Recycling Project



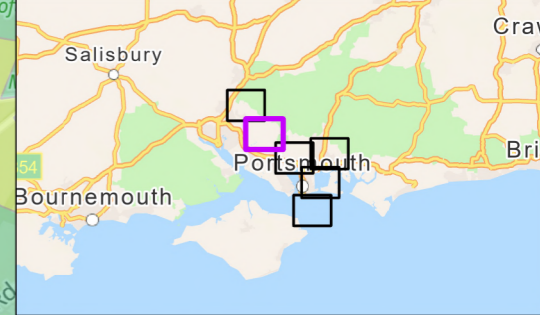
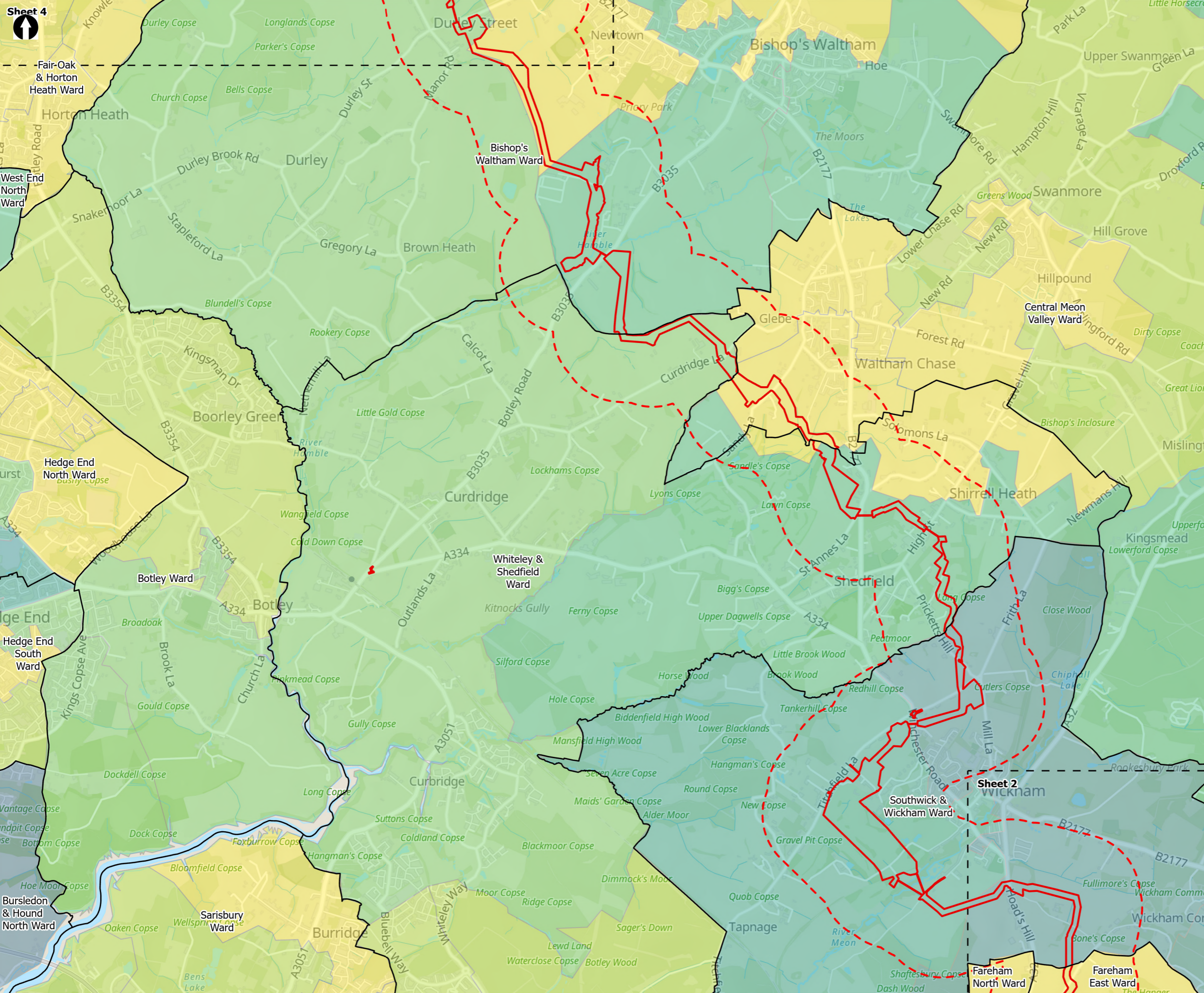
Figure 17.2  
 Index of Multiple Deprivation  
 Sheet 2 of 6

Drawn <b>DL</b>	GIS Checked <b>MW</b>	Checked <b>MP</b>	Approved <b>AK</b>
Scale at A3 <b>1:30,000</b>	Status <b>Final</b>	Revision <b>05</b>	Security <b>STD</b>

© Southern Water 2026  
 This document is issued for the party which commissioned it and for specific purposes connected with the captioned project only. It should not be relied upon by any other party or used for any other purpose. We accept no responsibility for the consequences of this document being relied upon by any other party, or being used for any other purpose, or containing any error or omission which is due to an error or omission in data supplied to us by other parties.



Drawing Number  
**PC5223-RHD-ES-ZZ-D-Z-0078**



**Order Limits**

- Order Limits
- Socio-economics, Tourism and Health 500m study area
- Sheet Extent Boxes 1:30K
- Ward Boundary

**Indices of Multiple Deprivation (2019) - (Based on LSOA's)**

- 4th
- 5th
- 6th
- 7th
- 8th
- 9th
- Least deprived decile

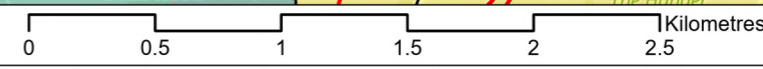
Coordinate system: British National Grid; Datum: OSGB 1936  
 Data sources: © Crown copyright and database rights 2026 Ordnance Survey 0100031673. Sources: Esri, TomTom, Garmin, FAO, NOAA, USGS, © OpenStreetMap contributors, and the GIS User Community, Contains OS data © Crown Copyright and database right 2023 Contains data from OS Zoomstack, Contains OS data © Crown Copyright and database right 2026. Contains data from OS Zoomstack

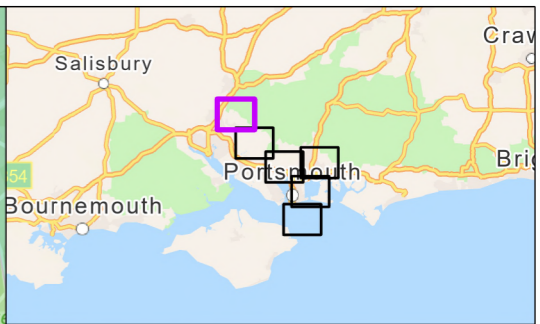
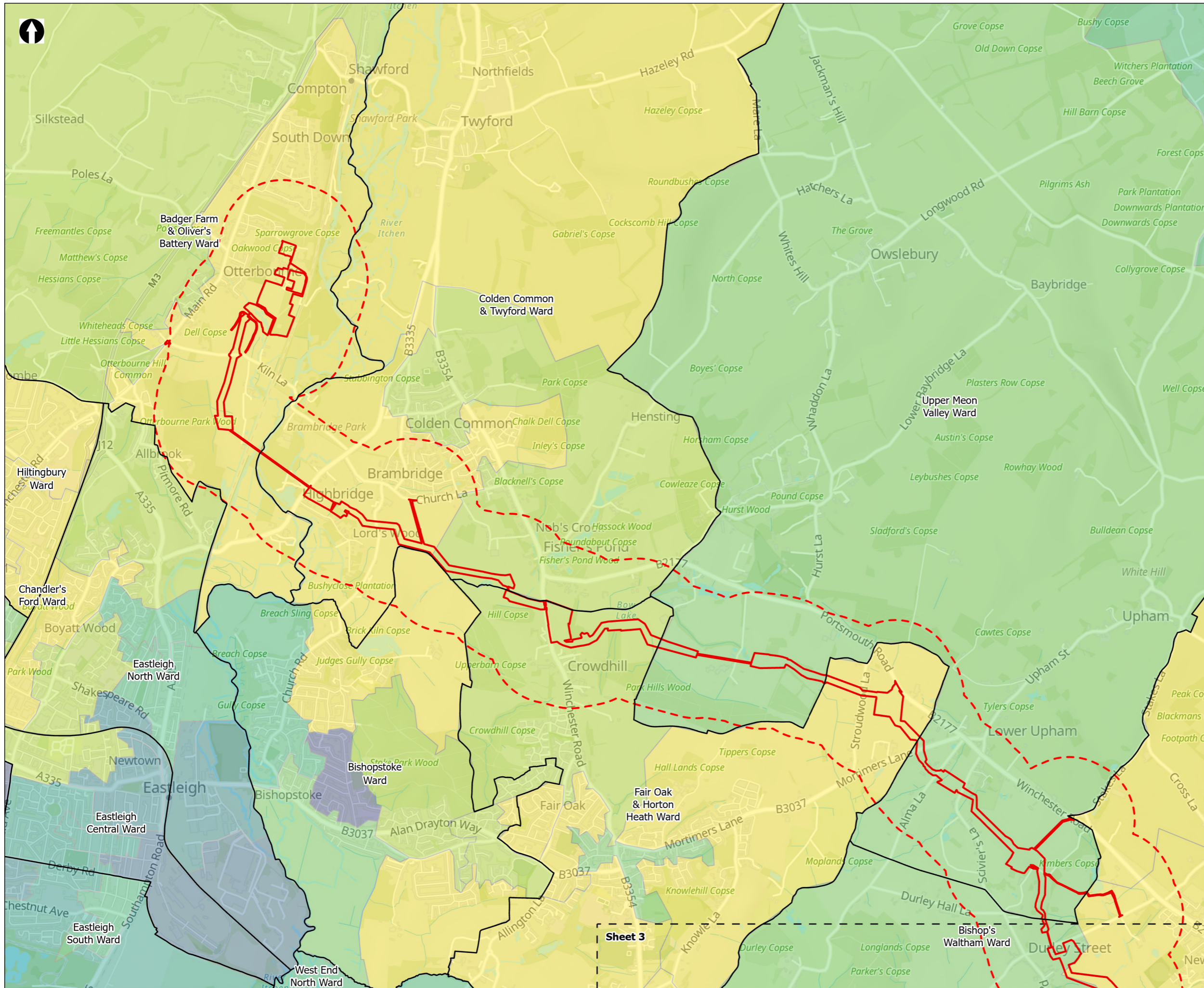
PROJECT TITLE  
 Hampshire Water Transfer and Water Recycling Project



Figure 17.2  
 Index of Multiple Deprivation  
 Sheet 3 of 6

Drawn DL	GIS Checked MW	Checked MP	Approved AK
Scale at A3 1:30,000	Status Final	Revision 05	Security STD





Order Limits  
 Socio-economics, Tourism and Health 500m study area  
 Sheet Extent Boxes 1:30K  
 Ward Boundary

**Indices of Multiple Deprivation (2019) - (Based on LSOA's)**

- 3rd
- 4th
- 5th
- 6th
- 7th
- 8th
- 9th
- Least deprived decile

Coordinate system: British National Grid; Datum: OSGB 1936  
 Data sources: © Crown copyright and database rights 2026 Ordnance Survey 0100031673. Sources: Esri, TomTom, Garmin, FAO, NOAA, USGS, © OpenStreetMap contributors, and the GIS User Community, Contains OS data © Crown Copyright and database right 2023 Contains data from OS Zoomstack, Contains OS data © Crown Copyright and database right 2026. Contains data from OS Zoomstack

PROJECT TITLE  
 Hampshire Water Transfer and Water Recycling Project

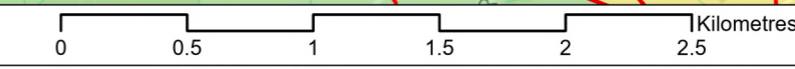


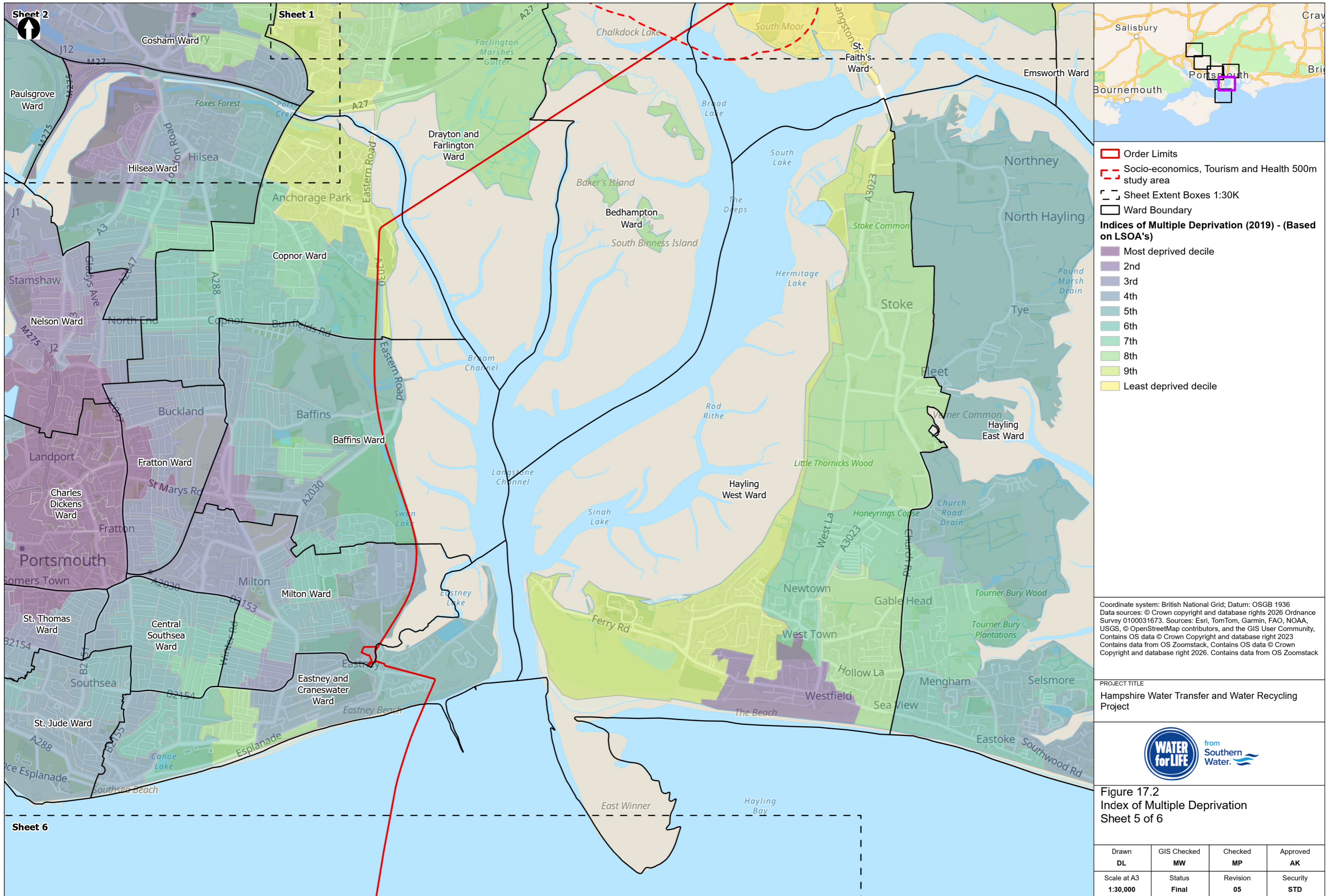
**Figure 17.2**  
 Index of Multiple Deprivation  
 Sheet 4 of 6

Drawn <b>DL</b>	GIS Checked <b>MW</b>	Checked <b>MP</b>	Approved <b>AK</b>
Scale at A3 <b>1:30,000</b>	Status <b>Final</b>	Revision <b>05</b>	Security <b>STD</b>

Drawing Number **PC5223-RHD-ES-ZZ-D-Z-0078**

© Southern Water 2026  
 This document is issued for the party which commissioned it and for specific purposes connected with the captioned project only. It should not be relied upon by any other party or used for any other purpose. We accept no responsibility for the consequences of this document being relied upon by any other party, or being used for any other purpose, or containing any error or omission which is due to an error or omission in data supplied to us by other parties.





- Order Limits
  - Socio-economics, Tourism and Health 500m study area
  - Sheet Extent Boxes 1:30K
  - Ward Boundary
- Indices of Multiple Deprivation (2019) - (Based on LSOA's)**
- Most deprived decile
  - 2nd
  - 3rd
  - 4th
  - 5th
  - 6th
  - 7th
  - 8th
  - 9th
  - Least deprived decile

Coordinate system: British National Grid; Datum: OSGB 1936  
 Data sources: © Crown copyright and database rights 2026 Ordnance Survey 0100031673. Sources: Esri, TomTom, Garmin, FAO, NOAA, USGS, © OpenStreetMap contributors, and the GIS User Community, Contains OS data © Crown Copyright and database right 2023. Contains data from OS Zoomstack, Contains OS data © Crown Copyright and database right 2026. Contains data from OS Zoomstack

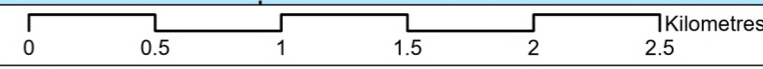
PROJECT TITLE  
 Hampshire Water Transfer and Water Recycling Project

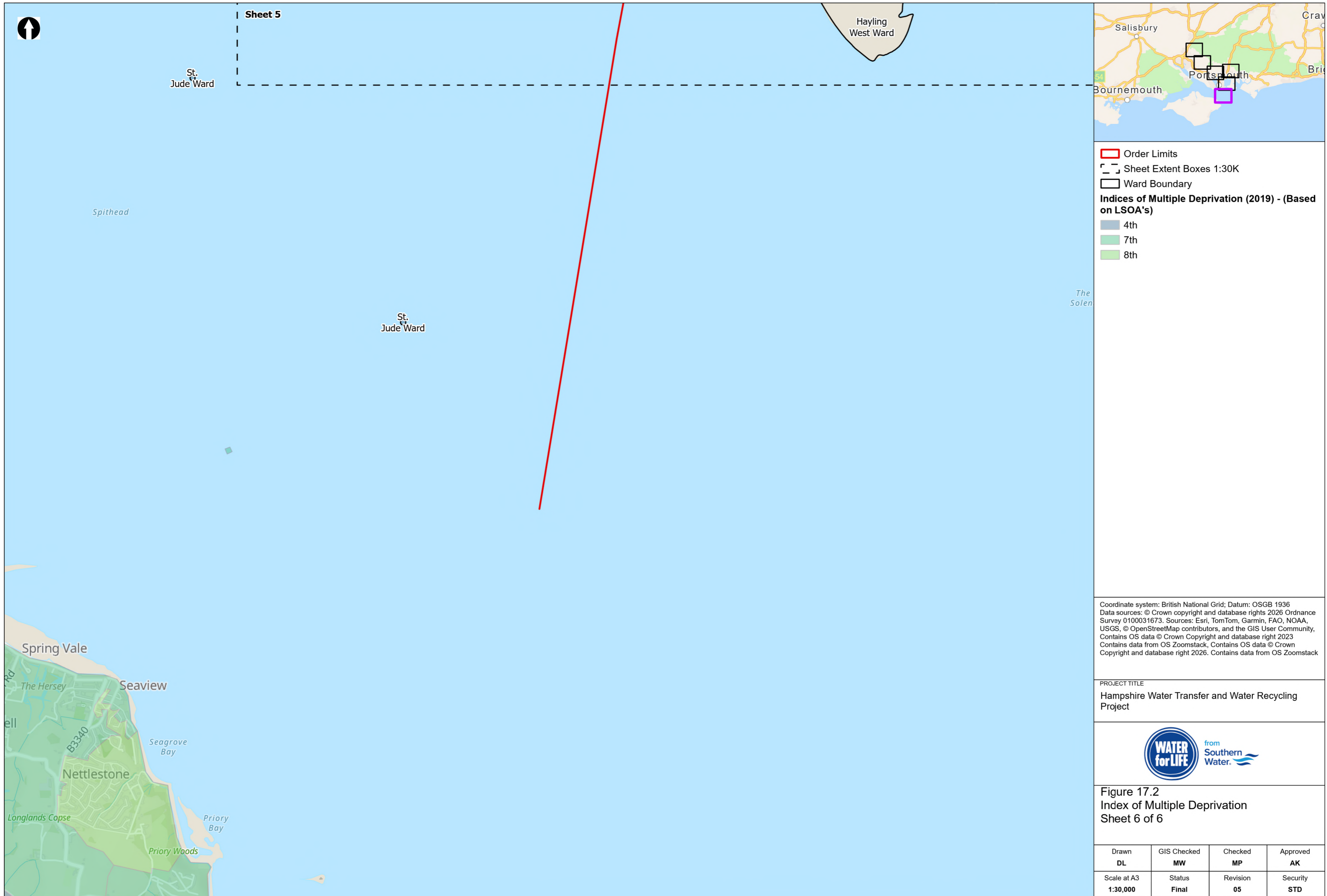


Figure 17.2  
 Index of Multiple Deprivation  
 Sheet 5 of 6

Drawn <b>DL</b>	GIS Checked <b>MW</b>	Checked <b>MP</b>	Approved <b>AK</b>
Scale at A3 <b>1:30,000</b>	Status <b>Final</b>	Revision <b>05</b>	Security <b>STD</b>

Drawing Number  
**PC5223-RHD-ES-ZZ-D-Z-0078**





- Order Limits
  - Sheet Extent Boxes 1:30K
  - Ward Boundary
- Indices of Multiple Deprivation (2019) - (Based on LSOA's)**
- 4th
  - 7th
  - 8th

Coordinate system: British National Grid; Datum: OSGB 1936  
 Data sources: © Crown copyright and database rights 2026 Ordnance Survey 0100031673. Sources: Esri, TomTom, Garmin, FAO, NOAA, USGS, © OpenStreetMap contributors, and the GIS User Community, Contains OS data © Crown Copyright and database right 2023 Contains data from OS Zoomstack, Contains OS data © Crown Copyright and database right 2026. Contains data from OS Zoomstack

PROJECT TITLE  
 Hampshire Water Transfer and Water Recycling Project



Figure 17.2  
 Index of Multiple Deprivation  
 Sheet 6 of 6

Drawn <b>DL</b>	GIS Checked <b>MW</b>	Checked <b>MP</b>	Approved <b>AK</b>
Scale at A3 <b>1:30,000</b>	Status <b>Final</b>	Revision <b>05</b>	Security <b>STD</b>

